



# [ Leadership ]

Report to the Community 2008



## At Barnes-Jewish Hospital,

*we are at the forefront of technological and scientific breakthroughs. We are defined by the talented staff that delivers exceptional care to our patients, alongside our physician partners at Washington University School of Medicine. Together, we are national leaders in medicine.*

2008 has been a year of many accomplishments, none of which would be possible without this collaborative teamwork. Once again, Barnes-Jewish Hospital was listed on the Honor Roll of America's best hospitals by *U.S. News & World Report*, ranking #12 in the nation. Our tremendous nurses were awarded Magnet status again in 2008 — we were the first adult hospital in Missouri to receive this prestigious designation in 2003, which is the highest award for nursing excellence given by the American Nurses Credentialing Center.

Barnes-Jewish Hospital received the 2008 Primaris Hospital Quality Award, honoring continuous and innovative improvement in health care. Each year, one Missouri hospital is selected to receive the award given by Primaris, a not-for-profit organization dedicated to improving health care. We've earned this recognition in part through patient-centered care and empowering employees and patients to elevate the importance of quality health care.

As I transition to a role focused on health care reform at BJC HealthCare, I am proud of all Barnes-Jewish Hospital has achieved during my tenure as president. From taking exceptional care of patients and advancing research, to providing additional opportunities in medical education,

we have continued to be on the cutting edge of medical care. I am confident Richard Liekweg, who joins Barnes-Jewish Hospital in September as the new president and CEO, will lead the hospital into the future, developing new technologies and treatments that are used worldwide.

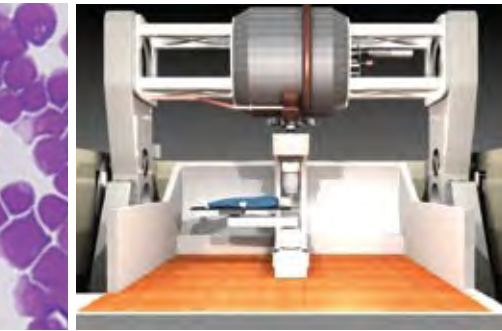
In this report to the community, I'd like to share how we are impacting patients' lives with superior technology and innovation, but also how we are helping the community outside our walls and in our neighborhoods. We provided 30,000 free flu vaccines to the community in the fall of 2008, funded by the Barnes-Jewish Hospital Foundation, at the hospital and at community sites such as malls, churches and neighborhood centers. Innovative medicine and research that translates into tomorrow's cures remain our hallmarks, but impacting our community is equally important. That is why Barnes-Jewish Hospital and Washington University Physicians remain national leaders in medicine.

Best regards,



*Andy Ziskind, MD*  
*President, Barnes-Jewish Hospital*





*Prototype of the Still River Systems proton beam*

## Leaders in Innovation

### *Proton beam revolutionizes delivery of cancer radiation treatment*

*Construction began in 2008 at the Siteman Cancer Center on a technology some think will revolutionize radiation therapy for certain cancer patients.*

The Kling Center for Proton Therapy at the Siteman Cancer Center at Barnes-Jewish Hospital and Washington University School of Medicine will take an expensive technology available at few centers in the United States and make it more cost effective and accessible.

"Protons allow us to target tumors with greater precision because we can adjust the depth of the radiation," says Jeff Bradley, MD, director of the Kling Center for Proton Therapy and the Barnes-Jewish Hospital Foundation's S. Lee Kling Endowed Chair in Radiation Oncology. "We then avoid a collateral dose that exposes other organs and healthy tissue."

The center expects to treat about 200 patients per year, focusing on pediatric patients, patients suffering from cancer in the central nervous system and spine, and other cancers such as head and neck, thoracic, abdominal and pelvic tumors.

Still River Systems, the company providing the Siteman Cancer Center with this technology, will begin delivery of the system during the fall of 2009.

### *Intraoperative MRI offers world's most advanced technology*

*The world's most advanced imaging technology, which enables neurosurgeons to perform important magnetic resonance imaging (MRI) tests while surgery is in progress debuted, at Barnes-Jewish Hospital in 2008.*

With only a handful of other hospitals in the world using intraoperative MRI technology, the two operating room suites offer another option to the 400-plus patients treated surgically for brain tumors annually at Barnes-Jewish, as well as other procedures where real-time imaging is vital. The IMRI suite allows surgeons to view MRI screens in real-time during surgery. This enhanced visualization provides a clearer view of tumors and reduces the need for follow-up MRI scans and possible repeat surgeries.

*The intraoperative MRI suite allows surgeons to get diagnostic-strength scans of the brain during surgery. Here, Ralph Dacey, MD, chief of neurosurgery, removes a pituitary tumor via a trans-nasal endoscopic approach in the intraoperative MRI suite. He is aided by a speculum, a surgical instrument invented in collaboration with Richard Chole, MD, chief of otolaryngology.*





*A team led by John Lasala, MD, PhD and Ralph J. Damiano, Jr., MD completes the first percutaneous valve replacement at Barnes-Jewish in January 2008.*

## Leaders in Heart Care

### *New valve replacement trial only offered at 15 leading hospitals*

*A new procedure being trialed at Barnes-Jewish Hospital could transform how some high-risk patients needing heart valve replacement are treated.*

Barnes-Jewish Hospital and Washington University School of Medicine are among 15 sites in the United States participating in the nationwide PARTNER (Placement of AoRTic traNscathetER valves) trial.

“This might reshape the whole approach surgeons and cardiologists take toward treating aortic valves,” says John Lasala, MD, PhD, director of interventional cardiology and the cardiac catheterization lab at Barnes-Jewish and Washington University. Through the trial, Lasala and his Washington University colleagues are, for the first time, able to replace the heart’s aortic valve via needle-puncture of the skin. Instead of requiring a cracked sternum, a compressed valve can be

delivered by a catheter placed through the thigh’s femoral artery. Once in position, a stent-like valve is inflated in the aorta and the balloon and catheter are withdrawn.

“This has the potential to supplant the open procedure for high-risk patients,” says Ralph J. Damiano Jr., MD, chief of cardiac surgery at Barnes-Jewish and Washington University, and the Barnes-Jewish Hospital Foundation’s John M. Shoenberg chair in cardiovascular disease. Damiano and Lasala serve as co-principal investigators of the PARTNER trial at the university.

### *Gold Seal for ventricular assist device program*

*The Barnes-Jewish ventricular assist device (VAD) destination therapy program earned a Gold Seal of Approval™ from the Joint Commission in September, 2008.*

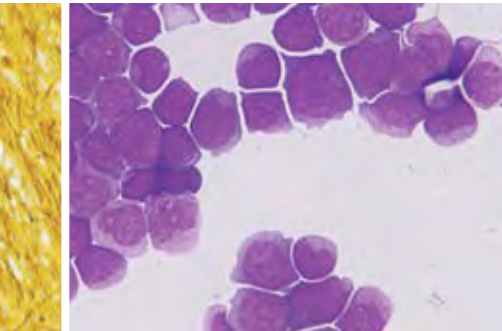
This recognition was a result of an extensive, unannounced visit by the Joint Commission that evaluated standards and assessed patients and employees through personal interviews.

The Barnes-Jewish and Washington University artificial heart program finished 2008 — its 21<sup>st</sup> year of implanting cardiac assist devices —

by implanting more VADs (31) than donor hearts via transplant (24). VADs, which assist the heart in pumping oxygen-rich blood, are helping patients with heart failure delay the need for a transplant, or forgo it altogether and live with the device. Improvements in technology, combined with fewer donor hearts available, make VADs a lifesaving alternative.

*Laura Bostick, RN, prepares instruments for I-wen Wang, MD, PhD, cardiothoracic surgeon to use during VAD implant surgery.*





*Acute myelogenous leukemia cells*

## Leaders in Cancer Care

### *Decoding cancer DNA*

*For the first time, scientists have decoded the complete DNA of a cancer patient and traced her disease — acute myelogenous leukemia (AML) — to its genetic roots.*

A large research team at the Genome Center and the Siteman Cancer Center at Barnes-Jewish Hospital and Washington University School of Medicine sequenced the genome of the patient — a woman in her 50s who ultimately died of her disease — and the genome of her leukemia cells to identify genetic changes unique to her cancer.

This pioneering work, reported in the Nov. 6, 2008 issue of the journal *Nature*, sets the stage for using a more comprehensive, genomewide approach to unravel the genetic basis of cancer. “A genomewide understanding of cancer, which is now possible with faster, less expensive DNA sequencing technology, is the foundation for developing more effective ways to diagnose and treat cancer,” says senior author Richard Wilson, PhD, director of Washington University’s Genome Center.

### *Siteman Cancer Center expands to West County*

*The Siteman Cancer Center expanded its presence on the campus of Barnes-Jewish West County Hospital in Creve Coeur, Missouri, offering patients in West St. Louis County access to expert care and clinical trials only available at a National Cancer Institute-designated Cancer Center.*

Now in a building with more public and treatment space, radiation oncology services have been added and more support and education programs are available through a partnership with The Wellness Community of Greater St. Louis.

The new location offers a chemotherapy treatment area with 24 infusion chairs; 19 exam rooms for Washington University medical oncologists, radiation oncologists and surgeons; a linear accelerator for radiation treatments and a resource center.

*The lobby of the Siteman Cancer Center’s new West County facility offers comfortable family waiting areas with internet access.*



## Leaders in the Community

### *Candidate Obama spends day at Barnes-Jewish Hospital*

*Presidential candidate Barack Obama promised to make health care a top priority during his campaign, and has followed through on that pledge, promising significant changes before the end of 2009.*

During a visit to Missouri in June 2008, Obama spent the day at Barnes-Jewish Hospital, learning first hand the challenges and opportunities in health care from Kate Marzluf, RN, and other nurses in the hospital's high risk cardiology unit. From serving breakfast to patients to understanding how technology assists nurses in their jobs, Obama worked one-on-one with Marzluf as she cared for patients. Several patients shared their stories of navigating the health system, and expressed their gratitude for the specialized care available at academic medical centers like Barnes-Jewish.

During his visit he was accompanied by the national press corp, and held a nationally televised live press conference at Barnes-Jewish. Obama also met privately with Andy Ziskind, Barnes-Jewish Hospital president, Lee Fetter, St. Louis Children's Hospital president and Steve Lipstein, president and CEO of BJC HealthCare, seeking their feedback on how he should approach health care reform.



*As a presidential candidate, Barack Obama visits Barnes-Jewish Hospital and seeks input from BJC executives, from left: Lee Fetter, president St. Louis Children's Hospital, Steve Lipstein, CEO, BJC HealthCare and Andy Ziskind, president, Barnes-Jewish Hospital*

*Amy Silbey, RN and Kate Marzluf, RN share a light moment with candidate Barack Obama in June 2008, during a day spent visiting Barnes-Jewish Hospital. Obama shared a work shift with Marzluf in the high risk cardiology unit to help him understand the challenges and opportunities in health care.*



## Leaders in the Community

### *Medical residents reach beyond walls of hospital*

*Three internal medicine residents, Drs. Elizabeth Blaney, Corey Foster and Patrick White, created a program at Gateway Homeless Shelter in St. Louis to provide free medical screenings and educational programs.*

Operating under the direction of the Residents and Fellows Diversity Initiative, established by the Barnes-Jewish Hospital Center for Diversity and Cultural Competence and funded by the Barnes-Jewish Hospital Foundation, Dr. White says he wanted to get information to underprivileged members of the community that they could not otherwise receive.

“We feel like we have been very blessed and given the right resources through the diversity initiative,” he says. “We wanted to give back and take it to the next level by going out to the community and forming a partnership with the homeless shelters.”

The diversity initiative encourages underrepresented minority medical students to seek their residency and fellowship training at Barnes-Jewish Hospital. Following training, the program hopes to retain these physicians to serve in faculty positions at Washington University School of Medicine or encourage them to establish their practice in St. Louis.



*Internal medicine residents Elizabeth Blaney, Corey Foster (seated) and Patrick White were instrumental in starting programs at homeless shelters.*

*Medical residents Elizabeth Blaney, Greg Nelson and Patrick White pose with members of Gateway Homeless Shelter after educating clients on managing their back pain.*





*A graduate of the Professional Nurse Development Program, Angela Perry, RN, BSN, shows leadership through mentoring other nurses in the program.*

## Leaders in Education

### *Staff nurses at the top of their game*

*At Barnes-Jewish Hospital, staff nurses are exposed to some of the most exciting and challenging patient care in the nation.*

To keep nurses motivated and engaged, a program designed to create a learning culture rewards staff nurses who enhance their skills.

The Professional Nurse Development Program (PNDP) empowers nurses to take ownership of their professional and personal development, by earning credit through advanced degrees, community service, professional presentations and more. While one of the most tangible benefits is a salary increase, nurses will say it's the satisfaction they get from their achievements being acknowledged.

Angela Perry, RN, BSN, charge nurse in 5300 antepartum, is one of the first 14 to join the program and is a mentor and role model to her coworkers. "It has made me push myself to be more helpful and successful than I could have dreamed," says Perry.

In 2008, a record number of nurses joined PDNP with more than 100 new applications, bringing the total to 248.

### *BEST program encourages careers in pharmacy*

*Terrence Harris, a junior at Hazelwood Central High School, had no thoughts of pharmacy as a career path before attending a summer institute last year designed to introduce pharmacy careers.*

Now, he is an involved student who hopes to be at St. Louis College of Pharmacy in two years.

To increase the number of multicultural students enrolling in pharmacy school in the St. Louis area, Barnes-Jewish Hospital, Express Scripts and St. Louis College of Pharmacy (BEST), along with support from the Barnes-Jewish Hospital Plaza Auxiliary, have created a joint program called the BEST Summer Pharmacy Institute.

"The BEST program not only broadened my knowledge of pharmacy, but opened my eyes to how a pharmacist can change lives," Harris says.

By educating young people about the pharmacy profession and the opportunities available and equipping them with some of the knowledge and skills that are vital to pharmacists, the program hopes not only to help with the shortage of pharmacists locally and nationwide, but also to create greater diversity in the field.

*High school junior Terrence Harris works with a vortex machine in the Barnes-Jewish Hospital pharmacy under the supervision of Steven Player and Gary Queensen. A participant in the BEST summer pharmacy institute, Harris has now decided on pharmacy for a career path.*



## Barnes-Jewish Hospital **community benefit**\*

Whether it's teaching teens how to be good parents, offering mentorship programs for transplant patients, or providing medical care free of charge, Barnes-Jewish Hospital's outreach and charity programs touch the entire community. In 2008, 157 educational programs were offered, reaching 66,841 members of our community with health-related topics at community lectures, health fairs and speaker's bureau engagements.

\*Data from the 2009 Missouri Hospital Association Community Investment Survey covering 2007 activities.



### **Caring for vulnerable populations**

<i>Charity care at cost</i>	<i>\$23.2 million</i>
<i>Unreimbursed Medicaid at cost</i>	<i>\$27.1 million</i>
<i>Other uncompensated care at cost</i>	<i>\$61 million</i>

### **Anchoring the regional safety net**

<i>Subsidized services</i>	<i>\$11.4 million</i>
<i>Emergency response planning</i>	<i>\$435,480</i>
<i>Donations</i>	<i>\$260,380</i>

### **Teaching and discovering innovations**

<i>Medical residents and fellows</i>	<i>\$36.6 million</i>
<i>Medical research</i>	<i>\$9.1 million</i>

<b>Improving community health</b>	<i>\$1.7 million</i>
-----------------------------------	----------------------

---

<b>Total:</b>	<b>\$170,795,860</b>
---------------	----------------------

---

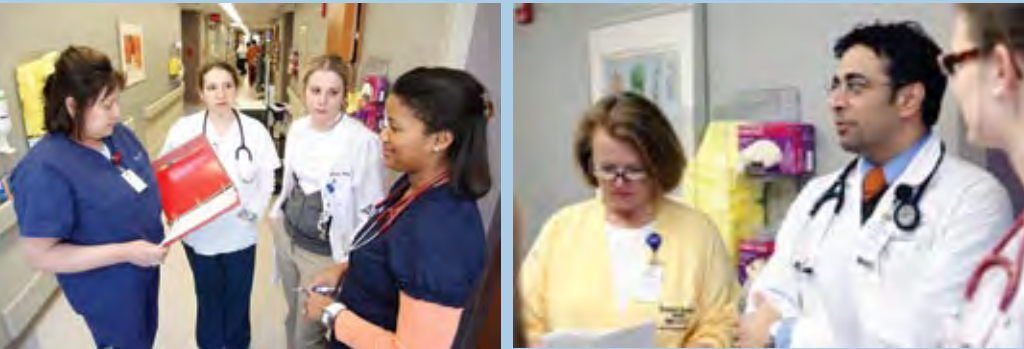


## **Barnes-Jewish Hospital facts and figures 2008**

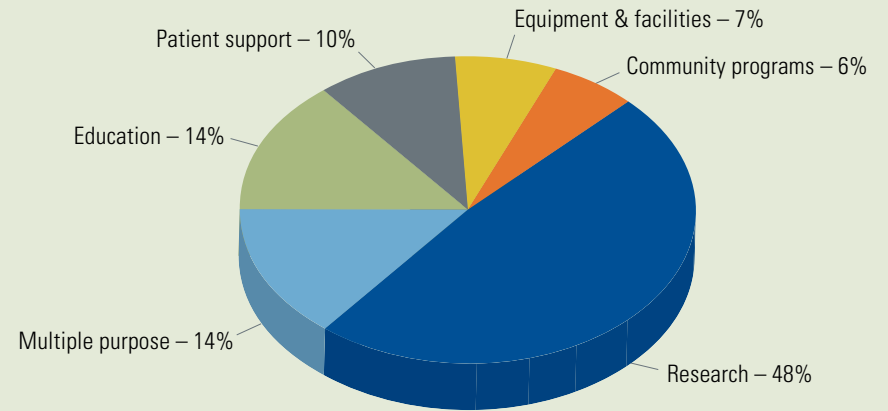
<i>Employees</i>	9,356
<i>Physicians</i>	1,765
<i>Residents/Fellows</i>	822
<i>Inpatient Admissions</i>	53,831
<i>Inpatient Surgeries</i>	18,157
<i>Outpatient Surgeries</i>	18,270
<i>Emergency Department Visits</i>	81,895
<i>Licensed Beds</i>	1,252
<i>Staffed Beds</i>	1,074
<i>Net Revenue</i>	\$1.3 billion

# Giving: Barnes-Jewish Hospital Foundation

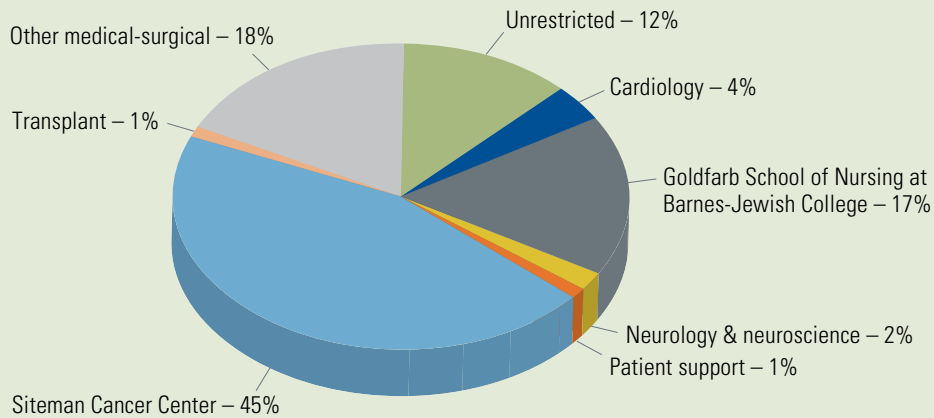
*Barnes-Jewish Hospital is ranked among the best in America because of our people — the world-class physicians, nurses, staff and volunteers who give their all to save and change lives every day, and the donors who support their work through the Barnes-Jewish Hospital Foundation.*



## Grants awarded in 2008 – \$17,987,271



## 2008 contributions received – \$13,262,454



*When you give to the Foundation, you help Barnes-Jewish Hospital offer new technology, such as our intraoperative MRI suite for brain surgery. You support clinical research, through which the hospital develops new treatments to battle devastating diseases. You help us educate the next generation of health care professionals, preventing additional health care disparities in our community.*

## Thanks to the following generous donors for their leadership in giving in 2008.

### CORNERSTONE SOCIETY

Recognizing significant lifetime contributions

#### —A—

Anonymous  
Mr. Howard E. Adams  
Mr. and Mrs. John S. Alberici  
Mr. and Mrs. Keith M. Alper  
Dr. Charles B. Anderson  
Mrs. Veronica Atkins  
Mr. James A. Auffenberg Jr.

#### —B—

Mr. and Mrs. Terrence M. Bader  
Mr. and Mrs. Bob L. Baker  
Mr. and Mrs. William L. Basler  
Mrs. Patricia L. Battram  
Mr. Andrew N. Baur  
Mr. and Mrs. Frank E. Bellew  
Mrs. Irvin Bettman  
Mrs. June R. Bierman  
Mr. and Mrs. Harold G. Blatt  
Mrs. Lillian Bloomfield  
Mrs. Lee Bohm  
Mrs. Charlotte Brodsky  
Mr. and Mrs. Lawrence Brody  
Mr. Chuck Brown  
Mrs. Marlene Brown  
Mr. and Mrs. M. Erwin Bry Jr.  
Mrs. Mary Jane Buchanan  
Dr. Timothy G. Buchman and  
Dr. Barbara Zehnbauer  
Mr. and Mrs. Marshall O. Buder  
Dr. and Mrs. Robert Burstein  
Mr. and Mrs. August A. Busch III

#### —C—

Mr. Nick A. Caporella  
Mr. Charles J. Cella  
Mr. John G. Cella  
Mrs. Judith Champ

Ms. Maxine Clark and Mr. Robert N. Fox  
Mr. and Mrs. James T. Claxton  
Mr. Jerry G. Clinton  
Mrs. Olive Gray Coe  
Mr. and Mrs. John Michael Cohen  
Mrs. Shirley W. Cohen  
Mr. and Mrs. Andrew B. Craig III

#### —D—

Dr. William H. Danforth  
Dr. and Mrs. Alexander E. Denes  
Mr. and Mrs. Jack Deutsch  
Mr. Timothy W. Downey  
Mr. and Mrs. Leo A. Drey  
Mr. and Mrs. John P. Dubinsky  
Mr. and Mrs. Melville J. Dunkelman

#### —E—

Mrs. Eunice Eckstein  
Mr. and Mrs. Bernard A. Edison  
Mr. and Mrs. Julian I. Edison  
Mr. and Mrs. Peter A. Edison  
Mr. and Mrs. Alyn V. Essman  
Dr. and Mrs. Ronald G. Evens  
Mrs. Joan Ezell

#### —F—

Mr. and Mrs. David C. Farrell  
Mr. and Mrs. Leon A. Felman  
Mr. and Mrs. William B. Firestone  
Mr. and Mrs. Ben Fixman  
Dr. and Mrs. I. Jerome Flance  
Mr. and Mrs. Gregory A. Fox  
Mr. and Mrs. Sam Fox  
Mr. and Mrs. Terry L. Franc III  
Mr. and Mrs. David M. Frank  
Mr. and Mrs. Harris J. Frank  
Mrs. Roxanne H. Frank  
Mr. and Mrs. Harvey A. Friedman  
Mrs. Leah Friedman  
Mr. and Mrs. Ronald A. Fromm

#### —G—

Dr. and Mrs. Ira C. Gall  
Mrs. Sue E. Gallop  
Mrs. Bernard Garfinkel  
Mr. and Mrs. William Gausselin  
Mrs. Betsy Gee  
Mrs. Bettie Gershman  
Mrs. Evelyn Beck Goldberg  
Mr. Alvin Goldfarb\*  
Mr. and Mrs. Alfred E. Goldman  
Mrs. Alice Goodman  
Mrs. Dorothy B. Gould  
Mr. and Mrs. Sidney Grossman

#### —H—

Mrs. Frieda Handelman  
Mr. and Mrs. Earle H. Harbison Jr.

Mr. and Mrs. Harvey A. Harris  
Mr. and Mrs. Whitney R. Harris  
Mr. and Mrs. Robert R. Hermann  
Mr. Neil S. Hirsch  
Mr. and Mrs. William F. Holekamp  
Mrs. Cheryl Holman  
Mrs. Jane Hunter

#### —I—

Mr. and Mrs. Robert C. Isaacs  
Mrs. Robert W. Isaacs

#### —J—

Mr. Franklin A. Jacobs and  
Ms. Marylen Mann  
Mrs. Sylvia Jacobs  
Mr. and Mrs. Michael V. Janes  
Mr. and Mrs. Dennis M. Jones

#### —K—

Mrs. Nancy F. Kalishman  
Mrs. Ruth M. Kay  
Dr. and Mrs. Charles Kilo Sr.

Mrs. Lora J. Kilroy  
Mr. and Mrs. Douglas O. Kirberg  
Mr. and Mrs. Eric Kirberg  
Dr. Samuel Klein and Dr. Hilary Klein  
Mr. Lee C. Kling  
Mr.\* and Mrs. S. Lee Kling  
Mr. and Mrs. Joseph B. Kloecker  
Mr. and Mrs. Charles F. Knight  
Mr. and Mrs. William J. Koman Jr.  
Mr. and Mrs. William J. Koman Sr.  
Mr. and Mrs. Edward J. Koplar  
Mrs. Alene Kopolow  
Mr. Jeffrey Korn  
Mrs. Gay Kornblum  
Mr. and Mrs. Robert E. Kresko  
Mrs. Betty J. Kreutzer

#### —L—

Mr. Leonard Landsbaum and  
Ms. Donna L. Moog  
Mr. and Mrs. Kenneth R. Langsdorf  
Mr. Jerry Levitt  
Mr. and Mrs. Kenneth W. Levy



### Goldfarb fellowship shows commitment to patient safety and quality

Christopher Carpenter, MD, MSc, of the Barnes-Jewish emergency department was named the first two-year Goldfarb Patient Safety and Quality Fellow in July 2008, funded by a gift from the Alvin Goldfarb Foundation.

Dr. Carpenter knows first-hand the challenges of creating an environment that improves patient safety outcomes. “Within the emergency department, the patient safety function is separated from education and research,” he says. As a Goldfarb Fellow, Dr. Carpenter is focused on creating an environment that improves patient safety outcomes — and in just his first six months of the fellowship, Dr. Carpenter helped change patient safety culture in both immediate and far-reaching ways.

*“The Goldfarb Fellowship has allowed me to take my research expertise and teaching responsibilities and apply it to patient safety,” he says. “It has opened up a door to a patient safety world that I didn’t know or understand before.”*

Mrs. Sally S. Levy  
 Mr. and Mrs. Lee M. Liberman  
 Mr. and Mrs. David B. Lichtenstein  
 Mr. Arthur H. Lieber and Ms. Gloria Bilchik  
 Mrs. Mary M. Lieber  
 Mr. and Mrs. Donn H. Lipton  
 Mrs. Carol B. Loeb  
 Mr.\* and Mrs. John T. Loire  
 Mr. and Mrs. Herman H. Louer  
 Ms. Ann Lux

Mrs. Patricia W. McMillan  
 Mr. and Mrs. Sewell A. McMillan  
 Walter and Cynthia Metcalfe  
 Mr. Lester J. Miller  
 Mr. I.E. Millstone  
 Mr. and Mrs. Robert D. Millstone  
 Dr. Stanley Misler  
 Mrs. Doris Monieson  
 Mrs. Dorothy R. Moog\*  
 Mrs. Barbara Morriss  
 Mr. John M. Murphy

## Foundation supports scholarships to school of nursing students



More than 200 students of Goldfarb School of Nursing at Barnes-Jewish College were awarded scholarships from 97 funds in 2008. That's a significant increase from 2004 — the year before the Barnes-Jewish Hospital Foundation launched its campaign to transform nursing education — when fewer than 100 students received scholarships from 74 funds. In just two years, generous donors to the Foundation helped increase its number of scholarship funds by 33 percent.

*“Scholarships ensure that we have the support to transform our student body and to fully prepare students for a nursing career in the 21<sup>st</sup> century, in a program that offers the most advanced teaching, learning and research opportunities available,” says Andy Ziskind, MD, Barnes-Jewish Hospital president. “We are grateful for every gift that helps exceptional people become exceptional nurses.”*

### —M—

Mrs. Jacqueline Maritz  
 Mr. and Mrs. Richard E. Markow  
 Mr. and Mrs. William J. Marshall  
 Mrs. Grace E. McClorey  
 Mr. and Mrs. Michael T. McClorey  
 Mr. and Mrs. John F. McDonnell

### —N—

Mr. and Mrs. Lee Newhouse  
 Mr. and Mrs. Andrew E. Newman  
 Mr. and Mrs. Eric P. Newman  
 Mr. and Mrs. Paul A. Novelly  
 Mr. and Mrs. Tony Novelly

### —O—

Mr. and Mrs. William T. O’Byrne  
 Ms. Sharon O’Keefe and Mr. Harold Moore  
 Dr. Edward Okun  
 Mr. and Mrs. William R. Orthwein Jr.

### —P—

Mrs. Helen R. Persons\*  
 Mr. Jack Phelan  
 Dr. and Mrs. Gordon W. Philpott  
 Mrs. Saretta Portnoy  
 Mrs. Milton Price

### —R—

Mr. and Mrs. E. Stephens Rand  
 Mr. and Mrs. Leland H. Reid  
 Mr. and Mrs. Mark Reinhold  
 Mrs. Walter U. Reisinger Sr.  
 Mr. and Mrs. James P. Retsinas  
 Dr. and Mrs. Herbert E. Rosenbaum  
 Mr. and Mrs. Jerrold Rosenblum  
 Mr. and Mrs. Billy Rosenthal  
 Mrs. Rosalyn G. Rosenthal  
 Mr. and Mrs. Donald K. Ross  
 Mr. and Mrs. Donald L. Ross  
 Mr. and Mrs. Zsolt Romy  
 Mrs. Elizabeth R. Ruwitch

### —S—

Mr. and Mrs. Louis S. Sachs  
 Mr. and Mrs. Harvey N. Saligman  
 Mr. and Mrs. Edward R. Samuels  
 Mr. Edwin M. Schaefer\*  
 Mr. and Mrs. Edward D. Schapiro  
 Mr. and Mrs. Randall F. Scherck  
 Mr. John A. Schiffman  
 Mrs. Ellen Schneiderman  
 Mrs. Marilyn A. Schnuck  
 Mr. and Mrs. Steven L. Schoolman  
 Mr. and Mrs. Marc A. Seldin  
 Mr. and Mrs. Michael S. Shannon  
 Mr. and Mrs. Robert E. Shapiro  
 Mr. and Mrs. Donald J. Sher  
 Mr. and Mrs. David S. Sherman Jr.  
 Mrs. Jean Shoenberg\*  
 Mrs. Natalie Siegel

Mr. Carl Simons  
 Ms. Fay Simons  
 Mr. and Mrs. L.W. Simpson  
 Mr. and Mrs. Alvin J. Siteman  
 Mr. and Mrs. David R. Smith  
 Mr. and Mrs. Jerry Spitzer  
 Mr. and Mrs. Sanford J. Spitzer  
 Mr. and Mrs. Michael H. Staenberg  
 Mrs. Cheryl Stein  
 Mr. and Mrs. Kenneth B. Steinback  
 Mrs. Norma E. Stern  
 Mr. and Mrs. Walter G. Stern  
 Mr. and Mrs. Todd Steussie  
 Mr. and Mrs. Joseph A. Stieven  
 Mr. and Mrs. Patrick T. Stokes  
 Mrs. Hanna I. Strauss  
 Mrs. Mary Strauss  
 Mr. and Mrs. John P. Stupp Jr.  
 Mr. and Mrs. Kenneth H. Suelthaus

### —T—

Mr. and Mrs. Moshe Tal  
 Dr. Jerome S. Tannenbaum  
 Dr. Joyce H. Tanurchis and Mr. John Tanurchis  
 Mr. and Mrs. Andrew C. Taylor  
 Mr. Jack C. Taylor  
 Mr. and Mrs. Jack E. Thomas Jr.  
 Mr. and Mrs. Anthony Thompson  
 Mrs. Dolores Toder  
 Mr. and Mrs. Carl Trauernicht Jr.  
 Mr. and Mrs. Byron D. Trott  
 Mr. and Mrs. Steven Trulaske

### —V—

Mr. and Mrs. Robert E. Vescovo

### —W—

Mr. Harvey N. Wallace and  
 Ms. Madeleine J. Elkins  
 Mrs. Jane Eagleton Weakley  
 Dr. and Mrs. Gary J. Weil  
 Mr. and Mrs. Eugene C. Weissman  
 Ms. Helen Welch  
 Ms. Helen Wells  
 Mr. and Mrs. Patrick M. Williamson  
 Mr. and Mrs. Raymond H. Wittcoff  
 Mrs. Shirley H. Wittcoff

Mrs. Kathryn E. Wolf  
 Mrs. Edith L. Wolff\*  
 Mr. and Mrs. William Wolff  
 Mrs. Ethel Wolfson

### —Y—

Mr. Richard L. Yalem  
 Mr. David A. Yawitz

### —Z—

Mr. Thelma Zalk  
 Mr. and Mrs. Mark H. Zorensky  
 Mrs. Mary G. Zorensky

## LEGACY CIRCLE

*Recognizing planned and deferred gifts*

### —A—

Anonymous  
 Dr. Charles B. Anderson  
 Mrs. Veronica Atkins

### —B—

Mr. and Mrs. Bob L. Baker  
 Ms. Clara E. Baker  
 Mrs. Lillian Bloomfield  
 Mrs. Dorothy M. Boyd  
 Mrs. Melba Brenning  
 Mrs. Ann Messick Brown\*  
 Mrs. Beverly C. Buder

### —C—

Mr.\* and Mrs. Albert Cassens  
 Mrs. Olive Gray Coe  
 Mrs. Shirley W. Cohen  
 Mr. and Mrs. Robert E. Courtney

### —D—

Michael W. Dickinson, M.D.  
 Mr. and Mrs. John P. Dubinsky  
 Mel and Joy Dunkelman

### —E—

Mr. and Mrs. Wm. Michael Ernst  
 Mr. and Mrs. Alyn V. Essman

Dean Michael L. Evans and Voy Andrews  
Mrs. Joan Ezell

—F—

Dr. and Mrs. I. Jerome Flance  
Mr.\* and Mrs. Harold Fohrman  
Mr. and Mrs. John Frezza

—G—

Ms. Cindy Galati  
Mr. Edward A. Gall  
Dr. and Mrs. Ira C. Gall  
Mrs. Donald P. Gallop  
Mrs. Bernard Garfinkel

Ms. Wilma J. Gaston  
Mr. John F. Gerdes  
Mr. and Mrs. Hymen Goldberg

—H—

Mr. Alvin Hamant  
Mr. and Mrs. Earle H. Harbison, Jr.  
Mr. and Mrs. James Hascall  
Mr. and Mrs. Robert R. Hermann  
Mrs. Carolyn Ingerson Hoffman and  
Mr. Harlan Hoffman  
Mrs. C. Ray Holman  
Mrs. Bernard Hulbert

—I—

Mr. and Mrs. Robert C. Isaacs

—K—

Mrs. Nancy F. Kalishman

—L—

Dr. Cindy A. Lefton  
Mr. and Mrs. Kenneth W. Levy  
Mr.\* and Mrs. John T. Loire  
Herman and Maggie Louer

—M—

Edwin B. Meissner, Jr.  
Betty Milius  
Mrs. Adaline S. Moore  
Mrs. Justine Myers

—N—

Barbara and Fred\* Niedner  
Mr. Joseph F. Nowak

—O—

Mr. and Mrs. William T. O'Byrne

—P—

Mr. Melvin J. Paris  
Mr. and Mrs. Robert Pryde

—R—

Mrs. Walter Reisinger, Sr.  
James P. and Nora G. Retsinas

Brigadier General and  
Mrs. James C. Roan, Jr.  
Mr. and Mrs. M. James Robertson

—S—

Llewellyn Sale, Jr.  
Mr. and Mrs. Edward R. Samuels  
Mrs. Jeanne A. Scarpulla  
Mr. John A. Schiffman  
Mr. and Mrs. Marc A. Seldin  
Irving and Ethel Selzer  
Mr. Norman J. Shapiro  
Shirley B. and Donald J. Sher  
Mr. and Mrs. Alvin J. Siteman  
Mr. and Mrs. Sanford J. Spitzer  
Mrs. Mary Strauss  
Lucille J. Sudol  
Mrs. Barbara E. Sutton

—T—

Mr. and Mrs. Robert E. Taylor  
Eb & Myra Thomas  
Mrs. Jack Toder  
Mr. and Mrs. Carl Trauernicht, Jr.  
Mrs. Alitz Tucholko

—V—

Mrs. Evelyn L. Vogel

—W—

Mr. and Mrs. George H. Walker III

Jane Eagleton Weakley  
Ms. Helen Welch  
Ms. Helen Wells  
Mrs. Elizabeth A. White  
Mrs. Kathryn E. Wolf

—Z—

Mrs. Thelma Zalk

**LEADERSHIP PLEDGES  
IN 2008**

*Recognizing donors for major  
multiple-year pledges in 2008*

**Distinguished Benefactor  
\$1,000,000 or more**

Barnes-Jewish Hospital  
Psychosocial Oncology Service  
BJC HealthCare  
Paul J. McKee, Jr. Associate Dean for  
Research, Goldfarb School of Nursing  
at Barnes-Jewish College  
Mr. and Mrs. William J. Koman Jr.  
The Koman Chair in Medical Oncology

**Major Benefactor  
\$100,000 - \$999,999**

Mr. and Mrs. William L. Basler  
Mr. and Mrs. William L. Basler Breast  
Cancer Risk Assessment Fund  
Mr. Nick A. Caporella  
S. Lee Kling Endowed Chair in  
Radiation Oncology  
Mr. and Mrs. Leon A. Felman  
S. Lee Kling Endowed Chair in  
Radiation Oncology  
Mr. and Mrs. William F. Holekamp Family  
Holekamp Family Chair in Urologic Surgery

**Benefactor  
\$10,000 - \$99,999**

Mr. Daniel B. Greenberg and  
Mrs. Susan Steinhauser  
S. Lee Kling Endowed Chair in

Radiation Oncology  
Mrs.Carolynn Ingerson Hoffman and  
Mr. Harlan Hoffman  
Goldfarb School of Nursing at  
Barnes-Jewish College Building Fund  
Mr. and Mrs. Douglas O. Kirberg  
S. Lee Kling Endowed Chair in  
Radiation Oncology  
Kling Family Foundation  
Molecular Prognostic Testing  
Clinical Study  
Mr. and Mrs. Edward J. Koplár  
S. Lee Kling Endowed Chair in  
Radiation Oncology  
Mr. and Mrs. Robert D. Millstone  
S. Lee Kling Endowed Chair in  
Radiation Oncology  
Mr. and Mrs. Harry T. Schukar  
Schukar Emergency Room  
Endowment Fund  
Michael and Carol Staenberg  
S. Lee Kling Endowed Chair in  
Radiation Oncology

**EXCEPTIONAL CARE SOCIETY  
Recognizing donors for  
gifts in 2008**

—Gifts of Life—  
\$50,000 or more

Mrs. Veronica Atkins  
Barnard Free Skin and Cancer Hospital  
Barnes-Jewish Hospital  
Barnes-Jewish Hospital Auxiliary,  
Parkview Chapter  
Barnes-Jewish Hospital Auxiliary,  
Plaza Chapter  
Mr. Andrew N. Baur  
BJC HealthCare  
Mr. and Mrs. Frank E. Bellew  
Brown Shoe Company Inc. Charitable Trust  
Calorie Restriction Society  
Mr. Nick A. Caporella  
Caleb C. and Julia W. Dula Foundation

Mr. and Mrs. Bernard A. Edison  
Mr. and Mrs. Julian I. Edison  
Mr. and Mrs. Peter A. Edison  
Express Scripts and the  
Express Scripts Foundation  
Mr. and Mrs. Ben Fixman  
Mr. and Mrs. Harvey A. Friedman  
Mr. Alvin Goldfarb\*  
Alvin Goldfarb Foundation  
Mr. and Mrs. William F. Holekamp  
Jewish Community Foundation of St. Louis  
Goldfarb Family Philanthropic Fund  
Ely and Mary Goldstein  
Philanthropic Fund  
Barbara B. Goodman Philanthropic Fund  
Alan Green 4 Chesed Fund  
Harvey A. Harris Philanthropic Fund  
Alene and Meyer Kopolow  
Philanthropic Fund  
Carol and Stephen H. Loeb  
Philanthropic Fund  
Jack Rosen Philanthropic Fund  
Saks Philanthropic Fund  
Marc and Marge Seldin  
Philanthropic Fund  
Jeanette Spector Philanthropic Fund  
Mark H. and Karen L. Zorensky Family  
Philanthropic Fund  
Dr. and Mrs. Charles Kilo Sr.  
Mr. and Mrs. William J. Koman Jr.  
Mr. and Mrs. Robert E. Kresko  
Mr. and Mrs. David Leizorek  
Mr. and Mrs. John F. McDonnell  
Community Foundation of Greater Memphis  
Eb and Myra Thomas Fund  
Mr. and Mrs. Alva Moog  
Mr. and Mrs. Andrew E. Newman  
Mr. and Mrs. Eric P. Newman  
Mrs. Rosalyn G. Rosenthal  
Greater Saint Louis Community Foundation  
Anonymous  
Barksdale Family Fund  
Arnold W. and Hazel A. Donald  
Charitable Fund  
Harry Edison Fund No. 2  
Farrell Family Fund  
Franc Family Fund

Ruth Greenberg Memorial Trust  
Holman Family Foundation  
Robert and Cathy Lachky Charitable Fund  
S. Lee McMillan Charitable Foundation  
Myles Family Fund  
Stolar Partnership Foundation  
Jack and Suzy Villa Charitable Foundation  
World Wide Technology Foundation

Mrs. Marilyn A. Schnuck  
Mr. and Mrs. Alvin J. Siteman  
Mr. and Mrs. Kenneth H. Suelthaus  
Mr. and Mrs. Moshe Tal  
Mr. and Mrs. Elbert L. Thomas Jr.  
Washington University in St. Louis  
Mr. and Mrs. Patrick M. Williamson  
Mrs. Edith L. Wolff\*

### —Gifts of Health— \$25,000 - \$49,999

Mr. and Mrs. Keith M. Alper  
Anheuser-Busch Companies Inc.  
Corporate Giving Program  
Barnes-Jewish Hospital Medical  
Staff Association  
Mr. and Mrs. William L. Basler  
Mrs. Mary Jane Buchanan  
Ms. Maxine Clark and Mr. Robert N. Fox  
Mr. and Mrs. James T. Claxton  
Mr. Jerry G. Clinton  
Mr. and Mrs. Bruce N. Cook  
Dr. William H. Danforth  
Mr. and Mrs. William B. Eiseman Jr.  
Dr. and Mrs. Ronald G. Evens  
Fidelity Charitable Gift Fund  
Amy and Barry Baker Family Fund  
Beiseker Family Fund  
Maxine K. Clark and Robert N. Fox  
Charitable Foundation  
Sara and Fred Epstein Family Foundation  
David Frank Charitable Gift Fund  
Christopher P. Hoffman Charitable  
Gift Fund  
John and Nancy Iselin Gift Fund  
Kleeman Family Charitable Fund

Herbert and Suzanne Lesser  
Family Foundation  
Siteman-Phillips Family Fund  
Rechter Charitable Foundation  
Mary Ann Smith Fund  
Stokes Family Fund

Mr. and Mrs. Gregory A. Fox  
Mr. and Mrs. Sam Fox  
Mr. and Mrs. Ronald A. Fromm  
Mr. and Mrs. Robert R. Hermann  
Mrs. Cheryl Holman  
Mrs. Nancy F. Kalishman  
Greater Kansas City Community Foundation  
Ron and Cheryl Fromm Fund  
Richard B. and Lynn M. Klein  
Foundation Fund  
Ms. Ruth O. Kersch  
Mr.\* and Mrs. S. Lee Kling  
Kling Family Foundation  
Mr. and Mrs. William J. Koman Sr.  
Laclede Gas Charitable Trust  
Mr. Lester J. Miller  
Mr.\* and Mrs. R. David Moore  
Mr. and Mrs. William R. Orthwein Jr.  
Mr. and Mrs. Zsolt Romy  
Mr. and Mrs. Marc A. Seldin  
Southwest Airlines Co.  
Michael and Carol Staenberg  
in conjunction with The Staenberg  
Family Foundation  
Mr. and Mrs. Kenneth B. Steinback  
Mr. and Mrs. Todd Steussie  
Mr. and Mrs. John C. Tlapek  
Vascular Therapies LLC

### —Gifts of Hope— \$10,000 - \$24,999

Anonymous  
Ameren  
Arch Coal Foundation  
Mrs. Lee Bohm  
Dr. and Mrs. Marty I. Boyer  
Dr. Timothy G. Buchman and  
Dr. Barbara Zehnbauer  
Christner Inc.

Mr. and Mrs. Robert G. Clark  
CME Foundation  
Mr. and Mrs. John Michael Cohen  
Mr. William A. Donius  
Mr. and Mrs. John P. Dubinsky  
Enterprise Rent-A-Car Foundation  
Mr. and Mrs. David C. Farrell  
Mr.\* and Mrs. Norman Friedman  
Mr. and Mrs. E. William Gillula  
Ms. Jane Goldberg  
Mr. Daniel B. Greenberg and  
Mrs. Susan Steinhauser  
Mr. and Mrs. Earle H. Harbison Jr.  
Mr. and Mrs. Whitney R. Harris  
Ms. Donna J. Hill  
Mr. and Mrs. Thomas J. Hillman  
Ms. Gertrude Hulbert  
Mr. and Mrs. Thomas B. Kampeter  
Mr. and Mrs. Douglas O. Kirberg  
Mr. Lee C. Kling  
Mr. and Mrs. Stephen Kling  
Kwame Foundation  
Mr. and Mrs. Anthony Thompson  
Mr. and Mrs. E. Daniel Liberman  
Mr. and Mrs. Steven H. Lipstein  
Mr. William M. Londoff  
Mr. and Mrs. William J. Marshall  
Mr. and Mrs. Sewell A. McMillan  
Mr. and Mrs. Robert D. Millstone  
Dr. Stanley Misler  
Mr. and Mrs. Paul E. Nelson  
Ms. Sharon O'Keefe and Mr. Harold Moore  
Mr. and Mrs. George Paz  
Herman T. and Phenie R. Pott Foundation  
Mrs. Marian Preiss  
Mr. and Mrs. Mark Reinhold  
Mr. Michael L. Roberts  
Mr. and Mrs. James A. Saitz  
Mr. and Mrs. Randall F. Scherck  
Craig and Tracy Schnuck  
Mr. and Mrs. David S. Sherman III  
Mrs. Natalie Siegel  
Special Design Health Care  
Mr. and Mrs. David L. Steward  
World Wide Technology Inc.  
Mr. and Mrs. Patrick T. Stokes  
Mr. and Mrs. Thomas A. Suntrup

Mr. and Mrs. Steven Trulaske  
Mr. and Mrs. Michael R. Turpin  
Universal Marketing  
Mr. and Mrs. Robert E. Vescovo  
Mr. Harvey N. Wallace and  
Mrs. Madeleine J. Elkins  
Dr. and Mrs. Gary J. Weil  
Wells Fargo  
Mr. Mark V. Wiese

### —Gifts of Strength— \$5,000 - \$9,999

Anonymous  
Ms. Joyce Aboussie  
Mr. and Mrs. Terrence M. Bader  
Balke Brown Associates  
Beta Theta Pi Fraternity  
Mrs. June R. Bierman  
Mr. and Mrs. Steve Bradford  
Mr. and Mrs. William Brown  
Mrs. Josephine Chaus  
Dr. Graham A. Colditz and Ms. Patti L. Cox  
Mr. and Mrs. Andrew B. Craig III  
Mrs. Lynn A. Crammond  
Mr. and Mrs. Edward L. Dowd Jr.  
Mr. and Mrs. Theodore R. Drewes  
Ms. Sandra E. Dufay  
Mr. and Mrs. L. B. Eckelkamp Jr.  
Mrs. Eunice Eckstein  
Edison Family Foundation  
Mr. and Mrs. Fred Epstein  
Mr. and Mrs. Mike Ernst  
ESIS Inc.  
Mr. and Mrs. Alyn V. Essman  
First Bank  
Fraternal Order of the Eagles, Grand Aerie  
Mr. Charles J. Galli  
Mrs. Evelyn Goldberg  
Mr. and Mrs. Paul M. Goldberg  
Mrs. Barbara B. Goodman  
Dr. Jonathan E. Gottlieb and  
Dr. Valerie A. Omicioli  
Mr. and Mrs. Keith B. Guller  
Mr. and Mrs. Harvey A. Harris  
Mr. and Mrs. John C. Hauck

Heart Support of America  
Mrs. Carolyn Ingerson Hoffman and  
Mr. Harlan Hoffman  
Mr. and Mrs. David H. Hoffmann  
Mr. and Mrs. Daniel J. Holmes  
Mr. and Mrs. Mark E. Hood  
Mr. and Mrs. Keith A. Huels  
Husch Blackwell Sanders LLP  
Mr. and Mrs. Edward Ignaczak  
Mr. and Mrs. Merrick Kleeman  
Mr. and Mrs. James G. Koman  
Mr. and Mrs. Edward J. Koplak  
Mrs. Gay Kornblum  
Mr. and Mrs. Kenneth S. Kranzberg  
Mr. and Mrs. Robert Lachky  
Mr. Leonard Landsbaum and  
Mrs. Donna L. Moog  
Mr. Howard N. Lesser  
Dr. Sandra G. Levy  
Mr. and Mrs. Paul J. McKee III  
Mr. and Mrs. Pat McNamee  
Merrill Lynch Private Banking and  
Investment Group  
Morgan Stanley  
Mr. and Mrs. David A. Peacock  
Peters Family Charitable Fund  
Plaza Motor Company  
The Private Bank  
Mr. and Mrs. Paul T. Putzel  
Mr. and Mrs. Joseph E. Rechter  
Dr. K. Daniel Riew  
Mr. and Mrs. James M. Riley  
Mr. Steven C. Roberts and Dr. Eva Frazer  
Mr. Al Roker and Ms. Deborah Roberts  
Mr. and Mrs. Robert E. Roth  
Mr. and Mrs. Robert E. Saur  
Mr. and Mrs. Steven F. Schankman  
Mr. Thomas Schmitt  
Mr. and Mrs. Donald J. Sher  
Mr. and Mrs. L.W. Simpson  
Starwood Capital Group Management LLC  
Mrs. Norma E. Stern  
Mr. and Mrs. Walter G. Stern  
Mr. and Mrs. Joseph A. Stieven  
Mr. and Mrs. John P. Stupp Jr.  
Mr. James E. Tabor

Mr. and Mrs. Andrew C. Taylor  
 Mr. and Mrs. William R. Taylor Sr.  
 UNICO National, St. Louis Chapter  
 Mr. and Mrs. Robert L. Virgil  
 Waranch and Brown LLC  
 Mr. and Mrs. William Wolff  
 Zemenick and Walker Inc.  
 Dr. and Mrs. Andrew A. Ziskind  
 Mr. and Mrs. Mark H. Zorensky

—Gifts of Compassion—  
 \$2,500 - \$4,999

Anonymous  
 AGA Institute  
 Mr. and Mrs. Clarence C. Barksdale  
 William S. Barnickel Foundation  
 Mr. and Mrs. Frank Bollinger  
 CCA Global Partners Inc.  
 Mr. and Mrs. Christopher Chivetta  
 First National Bank of St. Louis  
 Dr. and Mrs. Craig M. Coopersmith  
 Mrs. Joan Ezell  
 Mr. and Mrs. William B. Firestone  
 Mr. and Mrs. David M. Frank  
 Mr. and Mrs. Dan Glidewell  
 Mr. and Mrs. Jack D. Hamilton  
 Mr. and Mrs. Charles Hansen  
 Mr. and Mrs. Shaun Hayes  
 Mr. and Mrs. Thomas A. Hays  
 Icon Mechanical  
 Mrs. Sanjay Jain and Mr. Brooks Critchfield  
 Dr. and Mrs. R. Gilbert Jost  
 S. King Collection  
 Mrs. Penny Kodner  
 Dr. Maria Kovacs  
 Ms. Heidi Kraeling  
 Mr. and Mrs. John Kuhlmann Jr.  
 Mr. and Mrs. Benjamin J. Landesman  
 Lipton Law Center PC  
 Mr.\* and Mrs. John T. Loire  
 Dr. Katherine Mathews and  
 Mr. John Mathews  
 Brian and Beverly McKenna  
 Dr. Steven B. Miller and Dr. Victoria J. Fraser  
 Missouri Foundation for Health

Mr. and Mrs. Frederick Oertli  
 Pfizer Inc.  
 Mr. and Mrs. David P. Rakey  
 Ms. Elizabeth Rothschild  
 Mr. and Mrs. Alan R. Schaffer  
 Mr. John A. Schiffman  
 Dr. and Mrs. Larry J. Shapiro  
 Mr. and Mrs. David Sinclair  
 Southwest Bank of St. Louis  
 Mr. and Mrs. David R. Spence  
 Mr. Cory J. Spielberg  
 Mr. and Mrs. George W. Stark  
 Mr. Steven J. Stogel  
 Thompson Coburn LLP  
 Mr. David A. Yawitz  
 Mr. and Mrs. Robert Zellerman

—Gifts of Courage—  
 \$1,000 - \$2,499

Anonymous  
 Allergan Inc.  
 Mr. Paul Arenberg  
 Mr. Jay R. Arendt  
 AstraZeneca LP  
 Auxilium Pharmaceuticals Inc.  
 Clara E. Baker  
 Dr. and Mrs. Walter F. Ballinger  
 Mr. and Mrs. Philip H. Barron  
 Ms. Brenda A. Battle  
 Mrs. Judy Bauer  
 Mr. and Mrs. Warner L. Baxter  
 Mr. C. Richard Beard  
 Mr. and Mrs. John Beatty  
 Mr. and Mrs. Ted W. Beaty  
 Mr. and Mrs. Thomas Beiseker  
 Mrs. Irene Belsky  
 Mr. and Mrs. Joseph Berger II  
 Mr. and Mrs. Robert Bernstein  
 Arthur J. Bitker Memorial Foundation  
 Charitable Trust  
 Mr. and Mrs. Harold G. Blatt  
 Mr. Neil G. Bluhm  
 Dr. James C. Bobrow and Dr. Nanci Bobrow  
 Mrs. Adele M. Bogard  
 Mr. and Mrs. David Boles

Dr. Keith H. Bridwell  
 Mr. and Mrs. Douglas S. Brown  
 Mr. and Mrs. Melvin F. Brown  
 Mrs. Charla Bruce  
 Dr. L. Michael Brunt and Dr. Elizabeth Brunt  
 Mr. and Mrs. Robert L. Burg  
 Hon. Robin Carnahan and  
 Mr. Juan C. Antolinez  
 Ed and Judi Carter  
 Mrs. Julie Chakides  
 Ms. Jeanne Champier  
 Dr. and Mrs. Michael R. Chicoine  
 Mr. and Mrs. Jerry Chod  
 Mr. and Mrs. Ronald Chod  
 Mr. David P. Clark  
 Mr. and Mrs. Jerry Clubb  
 Mr. and Mrs. Allan Cohen  
 Mr. and Mrs. Thomas R. Corbett  
 Dr. and Mrs. James P. Crane  
 Creighton University  
 Mr. and Mrs. Tim Crowley  
 CSI Leasing Inc.  
 Czarnowski Display Service Inc.  
 Mr. and Mrs. Lawrence W. Dalaviras  
 Mr. and Mrs. Richard T. Dalton  
 Mr. Pradip K. Das  
 Mr. and Mrs. Warren W. Davis

Mr. and Mrs. Leo A. Drey  
 Duncan Family Foundation  
 Dr. and Mrs. Timothy J. Eberlein  
 Hon. Annette A. Eckert and  
 Mr. William L. Enyart  
 Ms. Rosette Ellman  
 Michael L. Evans, PhD, RN  
 Ms. Lisa A. Facer  
 Dr. and Mrs. Marc A. Fallah  
 Dr. Jeffrey B. and Mary Lou Farb  
 Mr. and Mrs. Leon A. Felman  
 Dr. and Mrs. Robert S. Figenshau  
 Mrs. Felecia S. Fleishman  
 Dr. and Mrs. James W. Forsen  
 Mrs. Roxanne Frank  
 Dr. Bradley D. Freeman  
 Mrs. Bennett Frelich  
 Mr. and Mrs. Milton Fry  
 Dr. Koichi Fujii  
 Ms. Donna C. Gail  
 Mr. and Mrs. Neil G. Galatz  
 Genzyme Corporation  
 Mr. Eugene R. Ghilardi  
 Global Impact  
 Mr. and Mrs. Edward K. Goldberg  
 Mr. and Mrs. Stephen S. Goldberg  
 Mrs. Doretta Goldenberg

Dr. and Mrs. Richard A. Hartman  
 Mrs. Zena Hellman  
 Mr. William J. Hill Jr.  
 Mr. and Mrs. M. Myron Hochman  
 Mr. and Mrs. Briggs A. Hoffmann Jr.  
 Mr. and Mrs. Grady E. Holley  
 Mr. and Mrs. Charles R. Holmes Jr.  
 Dr. Barbel Holtmann  
 Mr. and Mrs. George J. Holway  
 Mr. and Mrs. Merle Horowitz  
 Hospira Inc.  
 Mr. and Mrs. Edward T. Hui  
 Mr. and Mrs. Michael D. Hurst  
 Mrs. Mary Ann Hutkin  
 Mrs. Linda S. Hyken  
 Mrs. Lisa Iglauer  
 Mr. Franklin A. Jacobs and Ms. Marylen Mann  
 Jewish Communal Fund  
 Yale and Gale Miller Charitable Fund  
 Mr. and Mrs. Stephen R. Jonas  
 Mr. and Mrs. Robert E. Jones  
 Mr. and Mrs. John R. Jordan Jr.  
 Dr. and Mrs. John D. Kay  
 Miss Marcella M. Kennedy  
 Mr. Art D. King  
 Mr. and Mrs. Richard B. Klein  
 Dr. and Mrs. Ira J. Kodner

*Barnes-Jewish Hospital Foundation awards fellowship to oncology nurse*



For her master's thesis, Suping Bao, RN, is studying patients with Alzheimer's disease, and their respective caregivers, about their perspectives of hospice care and end-of-life issues. An adult nurse practitioner graduate student and an oncology nurse at Barnes-Jewish Hospital, Bao is the recipient of the Ruth and Sam Hacker Graduate Nursing Research Fellowship in Aging, funded by Dorismae and Harvey A. Friedman. The fellowship includes support for educational, conference and research endeavors in the field of memory and aging.

Tom and Kathy Day  
 Mrs. Edythe W. Deal  
 Joel and Betsy Dennis  
 Dr. Niraj Desai  
 Mr. and Mrs. Eugene Deutsch  
 Mr. and Mrs. Jack Deutsch  
 Mr. and Mrs. Walter I. Donius

Goldman, Sachs and Co.  
 Mr. and Mrs. Robert S. Goldstein  
 Golfers Against Prostate Cancer  
 Mr. and Mrs. James G. Gorman  
 Dr. and Mrs. Robert L. Grubb Jr.  
 Mr. and Mrs. Sam F. Hamra  
 Mr. and Mrs. Michael L. Harris

Dr. and Mrs. Marin H. Kollef  
 Mrs. Alene Kopolow  
 Dr. and Mrs. Phillip E. Korenblat  
 Mr. Jeffrey Korn  
 Mr. Edward M. Koslin and  
 Ms. Frances M. Weintraub  
 Mr. Robert C. Kramer

## *Foundation invests through endowed chairs*

Barnes-Jewish Hospital Foundation endowed chairs are extremely important to the hospital's partnership with Washington University School of Medicine and to the future of medicine. Established through charitable gifts to the foundation, they provide annual funding to competitively support the path-breaking work of innovative physicians. They support physicians who lead collaborative teams of other top physicians, scientists, nurses and technicians in research that will lead to better care, outcomes and cures for people all over the world.

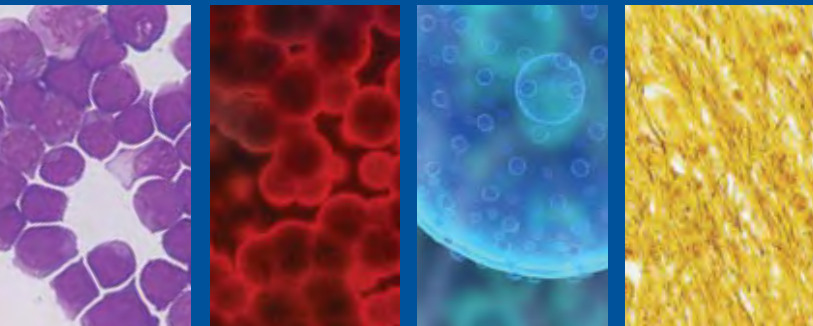
### *The following physicians were awarded Barnes-Jewish Hospital Foundation endowed chairs in 2008.*

**Nancy Bartlett, MD**, an oncologist for the Siteman Cancer Center at Barnes-Jewish Hospital and Washington University School of Medicine, was named the Koman Chair in Medical Oncology.

**Jeffrey S. Crippen, MD**, was named the Marilyn Bornefeld Endowed Chair in Gastrointestinal Research and Treatment. Dr. Crippen, professor of medicine, gastroenterology, is medical director of liver transplantation and co-director of clinical operations for the Washington University School of Medicine GI center at Barnes-Jewish Hospital.

**Bryan F. Meyers, MD, MPH**, was named the Patrick and Joy Williamson Chair in Cardiothoracic Surgery. Dr. Meyers, professor of surgery, is chief of thoracic surgery and director of the lung volume reduction program.

**Marin Kollef, MD, FACP, FCCP**, was named the Virginia E. and Sam J. Golman Endowed Chair in Respiratory Intensive Care Medicine. Dr. Kollef, professor of medicine, is director of medical critical care and respiratory care services at Barnes-Jewish Hospital.



Mrs. Emilee L. Krampf  
Mr. and Mrs.\* Alan Kraus  
Mr. and Mrs. Mark H. Krieger  
Dr. and Mrs. Ronald J. Krone  
Mr. and Mrs. Kenneth A. Kruse  
Mrs. June E. Laba  
Mrs. Lorraine Laiderman  
Mr. Don Land and Ms. Gretchen Floresca  
Mrs. Patricia Lane  
Mr. and Mrs. Harold T. Lange Jr.  
Mr. and Mrs. Lawrence E. Langsam  
Mr. and Mrs. Byron R. Lapin  
Mr. and Mrs. Donald E. Lasater  
Dr. Barbara L. Leighton  
Ms. Nancy J. LeMaster  
Mr. and Mrs. Richard W. Levinson  
Mr. William S. Levinson  
Mr. and Mrs. J. David Levy Jr.  
Mr. and Mrs. Steven A. Lieberman  
Mr. and Mrs. Michael Lineback  
Mrs. Carol B. Loeb  
Ms. Kathy Loeb  
Mr. Stephen H. Loeb  
Dr. Anthony J. Lubniewski and  
Dr. Christine T. Pham  
Dr. Susan E. MacKinnon  
Mr. and Mrs. John Malloy  
Dr. and Mrs. Charles B. Manley  
Mr. William E. Martin  
Mr. Luke G. Massar  
Matrex Exhibits  
Mr. and Mrs. John F. McAteer  
Mr. and Mrs. James S. McDonnell III  
Mr. and Mrs. Bruce L. McKee  
Mr. and Mrs. Thomas C. Melzer  
Mrs. Patricia Mendel  
Dr. Bryan F. Meyers  
Mr. Orville J. Middendorf  
Mr. and Mrs. David Miller  
Mr. and Mrs. J. B. Miller  
Mr. and Mrs. Yale Miller  
Mr. I.E. Millstone  
Mr. and Mrs. Earl N. Moore  
Pamela Y. Morris  
Mrs. Barbara Morriss  
Mrs. Betty A. Moulton  
Dr. and Mrs. Robert J. Myerson

Mrs. Gladys H. Myles  
Mr. and Mrs. Leslie G. Nackman  
Mr. and Mrs. Frank N. Newman  
Mr. Roy M. Nishino  
Mr. Joseph F. Nowak  
Mr. and Mrs. William T. O'Byrne  
Mr. Robert E. O'Connell  
Mr. Daniel O'Keefe  
Mr. George L. Palcheff  
Dr. G. Alexander Patterson  
Dr. Thomas F. Patton  
Dr. and Mrs. William A. Peck  
Mr. and Mrs. Richard Pfarr  
Mr. and Mrs. A. Gordon Phillips  
Mr. Perry M. Pinto  
Mr. and Mrs. David G. Potter  
Provident Trust Company  
Mr. and Mrs. Alan J. Ragan  
Mr. and Mrs. Allen Rector  
Mr. and Mrs. Timothy K. Reeves  
Mr. and Mrs. Rea W. Reid  
Mrs. Walter U. Reisinger Sr.  
Brig. Gen. and Mrs. James C. Roan Jr.  
Mr. and Mrs. G. Stephen Robins  
Mr. and Mrs. John E. Robinson  
Dr. Chinda V. Rojanasathit  
Mr. and Mrs. Ryan P. Roop  
Dr. and Mrs. Jack B. Rosen  
Mr. and Mrs. Jerrold Rosenblum  
Mrs. Edna U. Rosenheim  
Mr. and Mrs. Donald K. Ross  
Mr. and Mrs. Mahlon Rubin  
Mr. and Mrs. Robert W. Rupel  
Ms. Julia S. Ruvelson  
Mrs. Ann R. Ruwitch and Mr. John Fox Arnold  
Mr. and Mrs. Ronald S. Saks  
Saint Louis Blues Hockey Club LP  
Dr. Percival B. Salanga  
Dr. Llewellyn Sale Jr.  
Mr. and Mrs. Robert J. Scherrer  
Mr. and Mrs. David K. Schlafly  
Mr. and Mrs. Edward J. Schneidman  
Mr. and Mrs. Steven L. Schoolman  
Scrubs and Beyond LLC  
Mr. and Mrs. Harry T. Schukar  
Mr. and Mrs. Theodore F. Schwartz  
Mr. and Mrs. Michael Scully

Mr. Harold Seidel  
Mr. and Mrs. Robert E. Shapiro  
Dr. Surendra Shenoy and Dr. Shalini Shenoy  
Mr. and Mrs. Edwin G. Shiffrin  
Mr. and Mrs. Tom Shipley  
Mr. Peter A. Smith  
Mr.\* and Mrs. Gary Sosnoff  
Dr. and Mrs. Alan J. Stein  
Mr. and Mrs. Charles A. Stevens  
Mr. and Mrs. Raymond Stotler  
Mrs. Hanna I. Strauss  
Mr. and Mrs. Robert P. Stupp  
Mr. and Mrs. Richard T. Sullivan  
Takeda Pharmaceuticals North America Inc.  
and Subsidiaries  
Dr. and Mrs. William K. Tao  
Mrs. Elaine M. Tatkow  
Mrs. Christine B. Taylor  
Mr. and Mrs. William E. Taylor  
Mr. Bernard Tischler  
TKH Inc.  
Mr. Richard Townzen  
Ms. Sue K. Troha  
Ms. Frances M. Tucker  
Mr. Phillip C. Tucker  
Urban Strategies Inc.  
Mr. D. M. Van Konynenburg  
Ms. Coreen Vlodarchyk and  
Mr. Paul Vlodarchyk  
Vogel Sheet Metal and Heating Inc.  
Volk Construction Company  
Mrs. Jean M. von Hoffmann  
Mr. David T. Wade  
Dr. and Mrs. Stanley M. Wald  
Mr. and Mrs. John K. Wallace Jr.  
Mr. and Mrs. Alan Wallach  
Mr. and Mrs. James D. Weddle  
Mrs. Frances Weier  
Ms. Deborah Weitzman  
Mr. Robert Welker  
Mr. Lee S. Wielansky  
Mr. William F. Wischmeyer  
Mr. Bruce S. Wolff and Ms. Linda Miller  
Chancellor and Mrs. Mark S. Wrighton  
Wyman Center  
Mr. and Mrs. Larry P. Zarin

# Barnes-Jewish Hospital Board of Directors 2008

**Kathryn S. Bader**

*Former Chairman*  
US Bancorp Community  
Development Corporation

**James C. Bobrow, MD**

*Professor, Ophthalmology*  
*Voluntary Clinical Faculty*  
Barnes-Jewish Hospital and Washington  
University School of Medicine

**Charles W. Burson**

*Visiting Professor*  
Washington University Law School  
Bryan Cave LLP

**Richard A. Chole, MD**

*Chairman of Otolaryngology,*  
*Head and Neck Surgery*  
Barnes-Jewish Hospital and  
Washington University School of Medicine

**Maxine Clark**

*Founder and Chief Executive Bear*  
Build-A-Bear Workshop

**Arnold W. Donald**

*Former President and CEO*  
Juvenile Diabetes Research Foundation

**John P. Dubinsky**

*President and CEO*  
Westmoreland Associates, LLC

**Peter Edison**

*Chairman and CEO*  
Bakers Footwear Group, Inc.

**Peggy Elias**

*President*  
Barnes-Jewish Hospital Auxiliary, Plaza Chapter

**Gregory A. Fox**

*Vice Chair, Group President*  
Harbour Group, Ltd.

**Dorette Goldberg**

*Co-President*  
Barnes-Jewish Hospital Auxiliary, Parkview Chapter

**Joanne S. Griffin**

*Retired Corporate Vice President*  
Enterprise Rent-A-Car

**Harvey A. Harris**

*Chairman of the Executive Committee*  
The Stolar Partnership

**John R. Jordan, Jr.**

*Vice Chair and*  
*Retired Vice Chairman*  
Price Waterhouse

**Eugene S. Kahn**

*Former Chairman and CEO*  
The May Department Stores Company

**S. Lee Kling\***

*Chair*  
The Kling Company

**Ronald J. Kruszewski**

*Chairman, President and CEO*  
Stifel, Nicolaus & Co., Inc.

**Steven H. Lipstein**

*President and CEO*  
BJC HealthCare

**Susie Luten**

*Co-President*  
Barnes-Jewish Hospital Auxiliary, Parkview Chapter

**John F. McDonnell**

*Retired Chairman*  
McDonnell Douglas Corp.

**Jean Neal**

*President*  
JPNeal & Associates Consulting, LCC

**Darrell B. Roegner**

*Executive Vice President and*  
*President of the St. Louis Market*  
Premier Bank

**Renee Rosen**

*Co-President*  
Barnes-Jewish Hospital Auxiliary, Parkview Chapter

**Craig D. Schnuck**

*Former Chairman and CEO*  
Schnuck Markets, Inc.

**Larry J. Shapiro, MD**

*Executive Vice Chancellor*  
*for Medical Affairs and Dean*  
Washington University School  
of Medicine

**Leslie A. Small**

*Vice President and CFO*  
St. Louis Trust Company

**Ruth Springer**

*Co-President*  
Barnes-Jewish Hospital Auxiliary, Parkview Chapter

**David L. Steward**

*Chairman and Founder*  
World Wide Technology, Inc.

**Patrick T. Stokes**

*Board Chairman*  
Barnes-Jewish Hospital  
*Former Chairman*  
Anheuser-Busch Cos.

**Diane Sullivan**

*President and COO*  
Brown Shoe Company, Inc.

**Anthony Thompson**

*President and CEO*  
Kwame Building Group, Inc.

**Chancellor Mark S. Wrighton, PhD**

*Chancellor*  
Washington University in St. Louis

**Douglas H. Yaeger**

*Chairman, President and CEO*  
The Laclede Group, Inc. and  
Laclede Gas Company

**Andrew Ziskind, MD**

*President*  
Barnes-Jewish Hospital

## Barnes-Jewish Hospital Emeritus Members

**Harold G. Blatt**

*Partner*  
Bryan Cave

**Andrew B. Craig, III**

*Managing Director*  
RiverVest

**William H. Danforth, MD**

*Chair Emeritus, Chancellor Emeritus*  
Washington University in St. Louis

**Julian I. Edison**

*Retired Chairman of the Board*  
Edison Brothers Stores, Inc.

**Benjamin F. Edwards, III**

*Chairman Emeritus*  
A.G. Edwards & Sons, Inc.

**Sam Fox**

*Chairman and CEO*  
Harbour Group, Ltd.

**Earle H. Harbison, Jr.**

*Chairman*  
Harbison Corporation

**Charles F. Knight**

*Chair Emeritus*  
*Chairman*  
Emerson Electric Company

**Robert Lefton, PhD**

*President and CEO*  
Psychological Associates, Inc.

**Lee M. Liberman**

*Chair Emeritus*  
*Chairman Emeritus*  
Laclede Gas Co.

**Alvin J. Siteman**

*President*  
Site Oil Company

# Barnes-Jewish Hospital Foundation Board of Directors 2008

**Kenneth B. Steinback,**

*Board Chairman  
Chairman and CEO  
CSI Leasing*

**Bryan S. Cook**

*Chairman and CEO  
First National Bank of St. Louis*

**Thomas R. Corbett**

*Partner  
Thompson Coburn LLP*

**Andrew B. Craig, III**

*Managing Director  
RiverVest*

**William A. Donius**

*Chairman  
Pulaski Bank*

**John P. Dubinsky**

*President and CEO  
Westmoreland Associates, LLC*

**Leon A. Felman**

*Community Volunteer*

**Roxanne H. Frank**

*Community Volunteer*

**Susan K. Goldberg**

*Community Volunteer*

**Keith B. Guller**

*President, CEO and COO  
Essex Industries, Inc.*

**Earle H. Harbison, Jr.**

*Chairman  
Harbison Corporation*

**Thomas J. Hillman**

*FTL Capital Partners*

**William F. Holekamp**

*President  
Holekamp Capital*

**Mark E. Hood**

*Senior Vice President and CFO  
Brown Shoe Company, Inc.*

**Franklin A. Jacobs**

*Community Volunteer*

**Douglas O. Kirberg**

*President  
Kirberg Roofing, Inc.*

**Lee C. Kling**

*Vice President  
The Kling Company*

**William J. Koman**

*President  
The Koman Group*

**Edward J. Koplar**

*President and CEO  
Koplar Communications International, Inc.*

**Robert D. Millstone**

*President  
The Millstone Company*

**Sandra M. Moore**

*President  
Urban Strategies*

**Frederick Oertli**

*President and CEO  
Guarantee Electrical Company*

**Joseph E. Rechter**

*Chief Financial Officer  
Lowenhaupt Global Advisors, LLC*

**Steven C. Roberts**

*President  
Roberts Broadcasting Company/UPN-46*

**Herbert E. Rosenbaum, M.D.**

*Professor, Department of Neurology  
Washington University School of Medicine*

**Sally Roth**

*Upper Midwest Area Executive and  
Greater St. Louis President and CEO  
Regions Bank*

**Julia S. Ruvelson**

*Vice President  
Barnes-Jewish Hospital Foundation*

**Robert E. Saur**

*Chairman and CEO  
Conrad Properties Corporation*

**Steven F. Schankman**

*President  
Contemporary Productions, LLC*

**Alvin J. Siteman**

*President  
Site Oil Company*

**Peter A. Smith**

*Vice President of Legal Affairs  
National Car Rental and Alamo Rent A Car*

**Norma E. Stern**

*Community Volunteer*

**Walter G. Stern, CLU, ChFC**

*President  
W.G. Stern & Company*

**Joseph A. Stieven**

*CEO  
Stieven Capital Advisors, LP*

**Kenneth H. Suelthaus**

*Vice Chairman  
Polsinelli Shughart PC*

**Harvey N. Wallace**

*Member  
Brown Smith Wallace, LLC*

**David A. Yawitz**

*Community Volunteer*

**Andrew A. Ziskind, MD**

*President  
Barnes-Jewish Hospital*

**Mark H. Zorensky**

*President  
Hycel Properties Co.*

*\*S. Lee Kling served as board member  
and chairman for a portion of 2008*

## Ex-Officio

**Peggy P. Elias**

*President – Plaza Chapter Auxiliary  
Barnes-Jewish Hospital*

**Susan F. Luten**

*Co-President  
Barnes-Jewish Hospital Auxiliary, Parkview Chapter*

**Ruth A. Springer**

*Co-President  
Barnes-Jewish Hospital Auxiliary, Parkview Chapter*

**Patrick T. Stokes**

*Former Chairman  
Anheuser-Busch Companies, Inc.*

## Honorary Directors

**Shirley W. Cohen****William H. Danforth, MD****Joy Dunkelman****Alyn V. Essman****Harvey A. Friedman****Robert E. Kresko****Lee M. Liberman****E. Stephens Rand****Mahlon Rubin****Mary G. Zorensky**



One Barnes-Jewish Hospital Plaza  
St. Louis, MO 63110

[www.BarnesJewish.org](http://www.BarnesJewish.org)